



Modular Check Valve

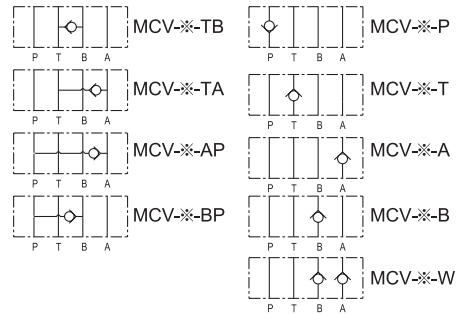
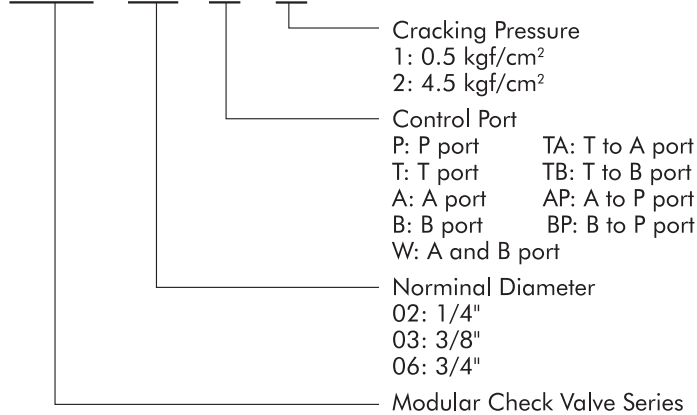
Features:

1. Modular check valve is widely applied in all kinds of circuits.
2. Simple and compact, has two kinds of cracking pressures to meet system requirement.



■ HOW TO ORDER

MCV - 02 - P - 1



Handling:

1. Differential circuit can be easily configured at P→B by attaching MCV-**-A above the MCV-**-AP on the subplate.

■ SPECIFICATIONS

Model No.	Maximum Working pressure kgf/cm ²	Maximum flow l/min	Cracking pressure kgf/cm ²	Weight kgs	Gasket surface Dimensions
MCV-02-P -A -B -T -TA -TB -AP -BP	250	50	1: 0.5 2: 4.5	1.2	ISO 4401-03-02-0-94
MCV-02-W				1.3	
MCV-03-P -A -B -T -TA -TB -AP -BP	250	100	1: 0.5 2: 4.5	2.5	ISO 4401-05-04-0-94
MCV-03-W				3.5	
MCV-06-P	250	180	1: 0.5 2: 4.5	14.0	ISO 4401-08-07-0-94

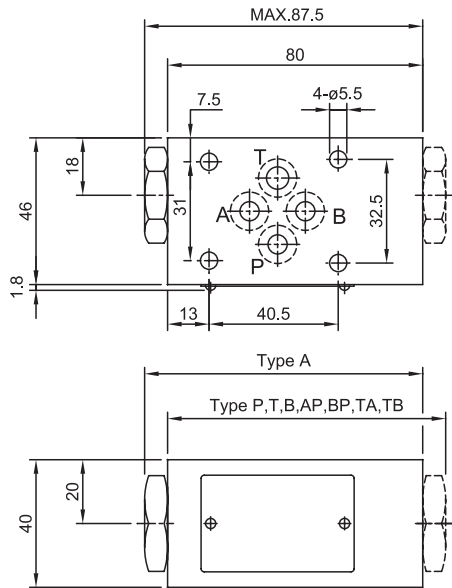


Modular Check Valve

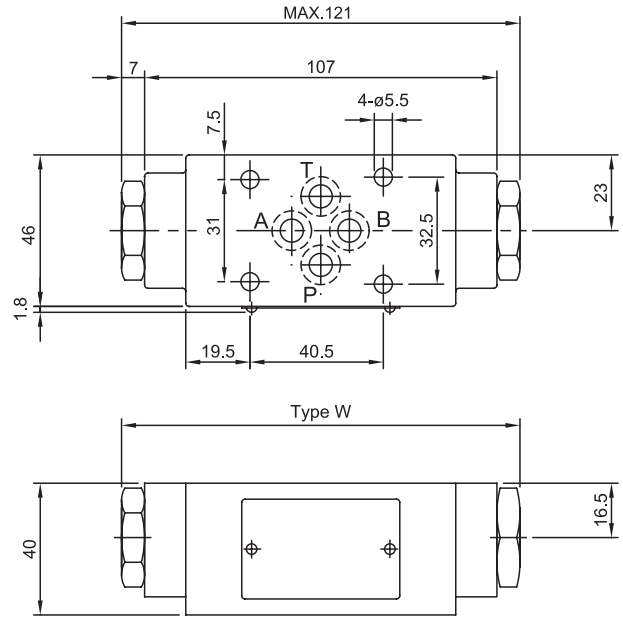
■ INSTALLATION DIMENSIONS:

UNIT: mm

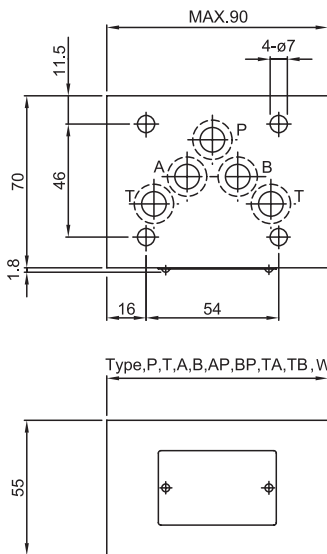
MCV-02-A. B. P. T. AP. BP. TA. TB



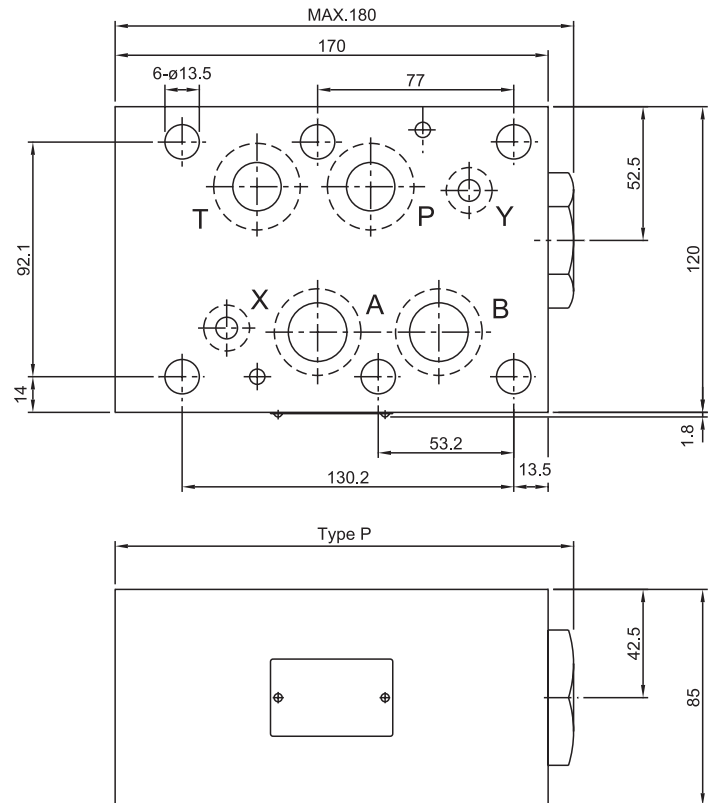
MCV-02-W



MCV-03



MCV-06-P





Modular Pilot Operated Check Valve

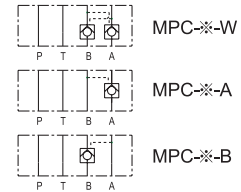
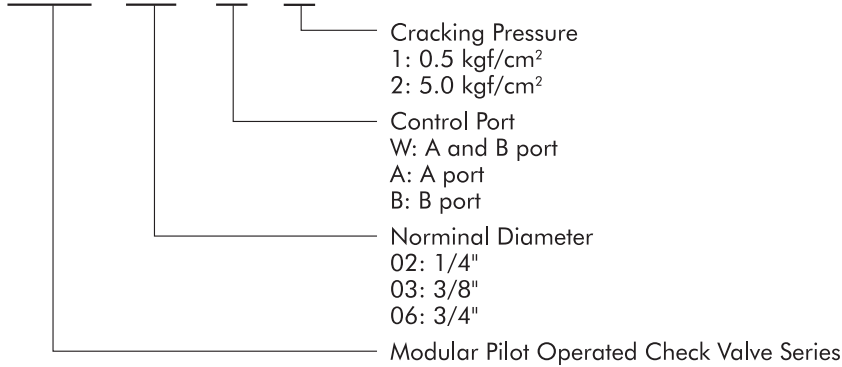
Features:

1. Modular pilot check valve is used to prevent actuator self-running and to maintain actuator position.
2. Maximum working pressure is 250 kgf/cm².



HOW TO ORDER

MPC - 02 - W - 1



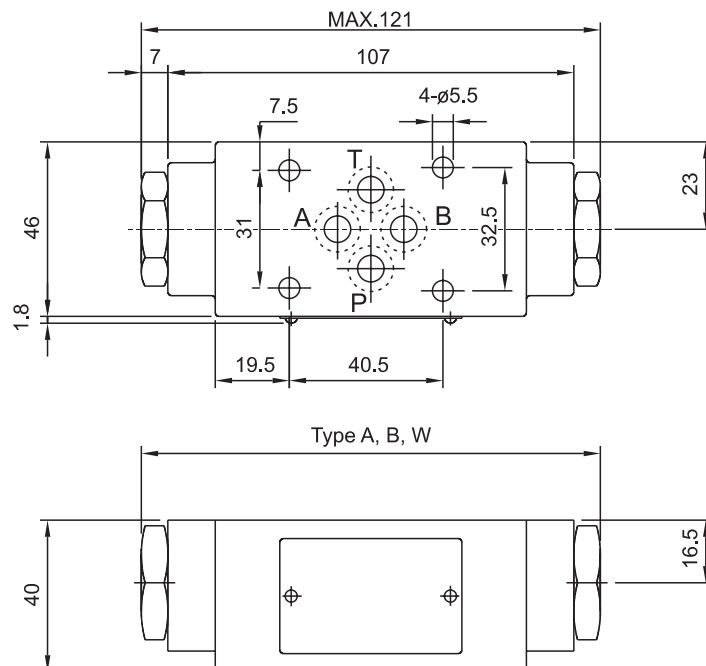
SPECIFICATIONS

Model No.	Maximum Working pressure kgf/cm ²	Maximum flow l/min	Cracking pressure kgf/cm ²	Weight kgs	Gasket surface Dimensions
MPC-02-A -B -W	250	50	1: 0.5 2: 4.5	1.2	ISO 4401-03-02-0-94
MPC-03-A -B -W	250	100	1: 0.5 2: 4.5	3.0	ISO 4401-05-04-0-94
MPC-06-A -B -W	250	180	1: 0.5 2: 4.5	13.5	ISO 4401-08-07-0-94

INSTALLATION DIMENSIONS:

UNIT: mm

MPC-02-W. A. B



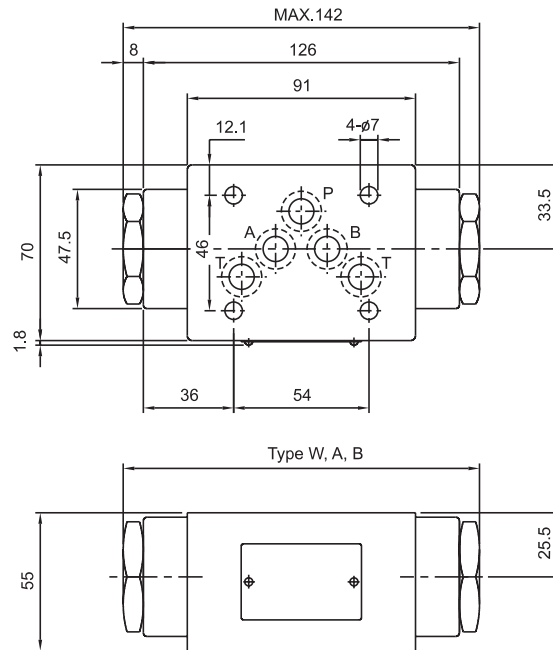


Modular Pilot Operated Check Valve

■ INSTALLATION DIMENSIONS:

UNIT: mm

MPC-03-W. A. B



MPC-06

